

Leibniz Center Infection(LCI)

The LCI is a dynamic and flexible research alliance of three internationally renowned Leibniz Institutes in the North of Germany:



Bernhard Nocht Institute for Tropical Medicine, Hamburg



Research Center Borstel - Leibniz Center for Medicine and Biosciences, Borstel



Heinrich Pette Institute, Leibniz Institute for Experimental Virology, Hamburg

Together, they combine more than 220 years of excellence in infection research and provide a stimulating environment for about 600 scientists studying all aspects of a broad range of infectious diseases. The united expertise in parasitic, bacterial and viral infections perfectly qualifies LCI as the center for infection research.

For more information, please visit www.lc-infection.de

Member of the



REGISTRATION DEADLINE

January 17, 2017

Register online:

<http://www.lc-infection.de/lci-symposium-2017-anmeldung.html>

Registration is free of charge. Participants are expected to meet their own accommodation and travel expenses.

Certified by the
General Medical Council
13 points



Cover picture credits:

Upper row, right: Influenza virus (HPI)

Lower row, right: Aedes albopictus (BNITM/Krüger)

Lower row, left: Usutu virus (BNITM)

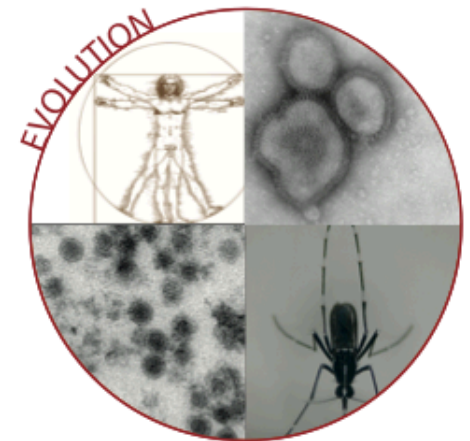
Upper row, left: Vitruvian Man by Leonardo Da Vinci (Fotolia © HP_Photo)



LCI-Symposium 2017 Evolution and Infection

January 19 - 20

Historic Lecture Hall
Bernhard Nocht Institute for Tropical Medicine
Hamburg



Organizers

Prof. Rolf Horstmann (BNITM)

Prof. Ulrich E. Schaible (FZB)

Prof. Thomas Dobner (HPI)

THURSDAY, January 19

11:00 Opening by Thomas Dobner (acting speaker of LCI), Hamburg, Germany

11:00 LCI Keynote Lecture

Chair: Thomas Dobner (HPI)

Roland Regös, Zurich, Switzerland
Virulence, disease tolerance and per-parasite pathogenicity in HIV infection

Session 1: Concepts & Models of Evolutionary Medicine

Chair: Bianca Schneider (FZB)

12:00 Deborah Dean, Berkley, USA
Chlamydia, zoonoses, and evolution: Global expansions and human disease

12:30 Thierry Wirth, Paris, France
Inferring evolutionary history of pathogens based on genome data

13:00 Frank Buchholz, Dresden, Germany
From surgery to genome surgery

13:30 **Lunch**

Session 2: Evolution of Resistance to Therapeutics

Chair: Tim Gilberger (BNITM)

14:30 Hinrich Schulenburg, Kiel, Germany
Evolutionary medicine: Novel antibiotic therapy against pathogenic bacteria

15:00 Matthias Merker, Borstel, Germany
Compensatory evolution of multidrug resistant M. tuberculosis strains

15:30 Rolf Kaiser, Cologne, Germany
Evolution of resistance in HIV and HCV

16:00 **Coffee**

Session 3: Microbiome and Infection

Chair: Stephanie Bertram (HPI)

16:30 John Baines, Kiel, Germany
The role of blood group related genes and the intestinal microbiome in mediating susceptibility to intestinal pathogens

17:00 Ulrich Schaible, Borstel, Germany
The elusive lung microbiome

17:30 Albert Zink, Bozen, Italy
The ancient microbiome - Presence and evolution of pathogens in ancient human remains

18:00 **Cocktail Reception – Meet the Speakers**

19:30 **Speakers Dinner**

Friday, January 20

9:15 **LCI Keynote Lecture**
Chair: Ulrich Schaible (FZB)

Philippe Sansonetti, Paris, France
Gut, symbionts and pathogens: a stormy «ménage à trois»

10:15 **Coffee**

Session 4: Host-Pathogen Co-Evolution (part 1)

Chair: Eleonore Ostermann (HPI)

10:45 Andrew Davison, Glasgow, UK
Coevolution of human herpesviruses with their host

11:15 Manuela Sironi, Bosisio Parini, Italy
Host-pathogen conflicts: selection at the interface

11:45 Carmen Buchrieser, Paris, France
Intracellular parasitism, the driving force of the evolution of virulence of Legionella pneumophila and the genus Legionella

12:15 **Lunch**

Session 4: Host-Pathogen Co-Evolution (part 2)

Chair: Thomas Jacobs (BNITM)

13:45 Daniel Wilson, London, UK
The evolutionary signature of within-patient adaptation in Staphylococcus aureus infections

14:15 Rolf Horstmann, Hamburg, Germany
Genetic studies of pulmonary tuberculosis in West Africa - functional and evolutionary aspects

14:45 Sebastian Suerbaum, München, Germany
Genome evolution during chronic infection with Helicobacter pylori

15:15 Herwig Leirs, Antwerpen, Belgium
Diversity of arenaviruses in African rodents: co-evolution and host barriers

15:45 **Farewell Address** by Thomas Dobner

Conference venue

Historic Lecture Hall of the Bernhard Nocht Institute for Tropical Medicine
Bernhard-Nocht-Strasse 74, D-20359 Hamburg, Germany
Phone: +49 40 42818-0

Contact

Dr. Susanne Pätzold, +49 4537 188-5840, spaetzold@fz-borstel.de
Dr. Dorothea Pieper, +49 40 48051-104, vorstandsreferat@hpi.uni-hamburg.de
Laura Zimmermann, +49 40 42818-264, presse@bnitm.de